

LEADERSHIP PROFILE



President Eden Theological Seminary St Louis, Missouri

Eden is not just a seminary—we're an ally. We fight for the community, the marginalized, for interfaith unity, and the greater good.

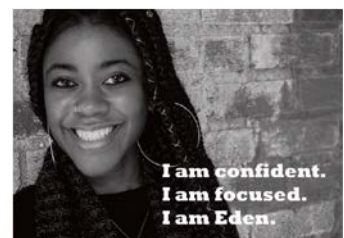
AN OPPORTUNITY FOR IMPACT



This is a time of momentum and transformation at Eden Theological Seminary. Eden is at the forefront of progressive theological education, known for educating leaders for ordained ministry and the community. Eden played an activist leadership role on issues of equity and justice following the tragic killing of Michael Brown in Ferguson in 2014. Today, Eden is thriving as an engaged, welcoming and inclusive community.

This is a pivotal time for theological education. Eden is adapting to profound cultural and structural changes in the mainline church, demographics and lifestyles. The alma mater of progressive luminaries such as Reinhold Niebuhr and Walter Brueggemann, Eden is building on its core strengths of preparing extraordinary pastors and empowering leaders of social change. Its unique contextual education model combines theory with practice, challenges systemic inequity barriers and prepares leaders with a heart for justice for the community and the congregation. The Walker Leadership Institute provides innovative pathways for leaders to align their faith with their profession.

Eden's beloved President David Greenhaw will retire in June 2020 after 23 years. The President who will succeed Dr. Greenhaw has an exciting mandate: to bring vision that enables Eden to adapt, differentiate and thrive; and to bring leadership that builds collaborative teams, drives change and diversifies relationships and resources.



ABOUT EDEN



One of six seminaries of the United Church of Christ (UCC), Eden is thriving as a welcoming, joyful and inclusive community. Eden has been educating women and men to become community leaders for over 160 years, primarily through ordained Christian ministry. The institution offers professional and graduate degree programs including Master of Divinity, Master of Community Leadership, Master of Theological Studies and Doctor of Ministry.

With about 250 students and a stunning residential campus, Eden has annual revenues of \$3.4 million and an endowment of close to \$20 million. The Seminary is accredited by the Association of Theological Seminaries and the Higher Learning Commission.

The tragic 2014 death of Michael Brown in nearby Ferguson served as a catalyst for the Eden community, prompting Eden leaders and students to act. Consistent with its heritage of fostering inclusion and justice, Eden took an activist community leadership role during and since the protests. Seminary leadership – faculty, staff and students -- have renewed and strengthened their commitment to fight for the community and people who are marginalized.

Eden aims to better the world through its differentiated, contextual approach. The institution is developing new ways to train leaders for the church and the community, including innovative programs and class scheduling. The Walker Leadership Institute prepares leaders for public or private sector careers in enterprise, civic engagement, community organization, public policy and/or advocacy. It offers a Master of Community Leadership degree, mid-career and non-degree programs.

Assets that differentiate Eden include:

- A talented and respected faculty that is committed to progressive theology and delivering on it academically.
- Students' ability to achieve academic excellence and personal spiritual development in an environment of pastoral care.
- Being a leading voice and innovator for catalyzing hope and impact in and for the global progressive Christian movement.
- A record of supporting human liberation in many forms, giving Eden credibility in the world of leading social change.

Eden's current strategic plan prioritizes imaginative, forward-looking approaches to training leaders for the church. Eden intends to build more

“Eden Theological Seminary is called to strengthen the life of the church by educating women and men for ministry, enlivening critical reflection on faith, and supporting bold Christian discipleship.”

--Mission Statement of Eden

partnerships with business, other organizations and the social justice movement, to engage in new interfaith dialogue and to engage fresh thinking around audiences and programs to deliver theological education. The Seminary will prepare future leaders to advance a vibrant future for the church, seek to bring faith-inspired ethics to business and civic entities and include all voices in efforts to build a better future for all.

Aspirations for the Future

Eden’s board, faculty, staff, students and stakeholders are excited about the next chapter. Aspirations include accelerating momentum and leadership in the emerging church and creating a bold, innovative plan that envisions:

- Playing a central role in the wider community on emerging issues of justice, spiritual and interfaith connection, and in shaping a socially just and inclusive society.
- Advancing the vitality and inclusiveness of the progressive church.
- Increasing Eden’s profile, differentiation, partnerships and impact.
- Enhancing financial stability and ability to innovate by diversifying and expanding philanthropic support and earned revenues.
- Building on Eden’s core strengths of inspiring and growing progressive leaders for the church and the community.



Eden plans a strong, energizing transition to new Presidential leadership, and simultaneous deepening of connections with alumni and other supporters. Like other theological institutions, Eden is challenged to tap into new pools of students, create alternative paths to ministry and creatively address evolving student needs and preferences.

Eden is challenged to fully leverage its beautiful campus, to identify new sources of support and revenues, and to live adaptively and imaginatively in a constantly evolving theological educational environment.

For more information, please visit www.eden.edu.

MANDATE FOR THE NEW PRESIDENT

The President will be a compelling, prophetic theological leader with authentic passion for social justice and the progressive, evolving church. The President will have a track record of leadership, growth and innovation in relevant contexts. The President will lead and enhance Eden's culture, growth and business model, empowering new levels of accomplishment for the faculty, staff, current and future students.

The President will lead Eden into its next exciting era, building on current momentum. The President will lead Eden at the forefront of a progressive, just and inclusive church, and will lead Eden's transformation into the seminary of the future. The President will:

1. **Provide leadership and foster strategic vision.** The President will be a dynamic, big-picture leader who inspires, engages, listens, guides and collaborates with the board, faculty, staff and broader community. The President will embrace and embody the ideas of Eden, and will have an expansive view of the church. The President will move the Eden community to adopt a bold, forward-looking vision, goals, and priorities that leverage its unique potential.
2. **Be a compelling public face of Eden.** As Eden's chief ambassador and relationship builder, the President will have a magnetic personality and the ability to grow relationships and support. The President will be an outstanding, culturally competent communicator and fundraiser able to attract and connect people and partners to Eden. The President will expand Eden's profile and circle of supporters.
3. **Inspire a high-performing team.** The President will build and manage a strong team, engendering open two-way communication, trust and team spirit. By hiring and empowering outstanding team members, the President will inspire a culture of high performance, innovation and collaboration.
4. **Demonstrate business and financial acumen.** The President will lead the institution to grow, leverage, diversify, maximize and stabilize its financial and other assets. Eden's opportunities include technology, the campus, investment strategy, current and potential educational and leadership offerings, partnerships and revenue-generating initiatives.
5. **Lead and empower transformation.** The President will be skilled in leading transformation, with proven change management and consensus building expertise. The President will be a catalyst for creating a new models of theological and leadership education. Through entrepreneurial exploration, organizational evolution and good decision making, the President will ensure Eden's differentiated position and vibrancy for generations to come.

PERSONAL CHARACTERISTICS

The President will be a visionary, compelling leader who connects well with the full diversity of Eden stakeholders, including the academic and neighboring communities, the UCC, alumni, supporters, partners, interfaith and other communities. The President will have a proven, relevant track record, ideally including academic, theological and/or nonprofit leadership experience. The President will have a demonstrable call to Eden, its uniqueness, its stakeholders and its potential. **The President will have assets that include:**

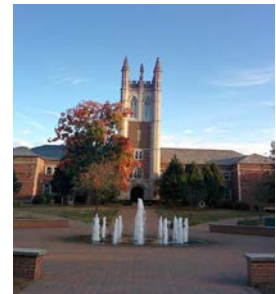
- A magnetic, approachable personality that engenders trust and support.
- Integrity, self-confidence and humility.
- Transparency, emotional intelligence, listening and relationship skills.
- Theological and academic credibility, with passion for Eden's mission and the church.
- An entrepreneurial spirit that seeks out fresh thinking and solutions.
- Depth in social justice, equity, inclusion and cultural competency.
- Organizational leadership, team-building and culture-building skills.
- Management expertise, including ability to lead change, to address clear choices among competing priorities, and to delegate.
- A collaborative, servant leadership approach.
- High energy, and a positive and optimistic persona.

THE RELATIONSHIPS

The President reports to the Board of Trustees and leads a team of about 50 faculty and staff members. Direct reports include the Dean of the Seminary, the Chief Financial Officer, the VP of Advancement and the Director of Operations.

THE LOCATION

Eden Theological Seminary is in Webster Groves, a bucolic community close to St. Louis. The area is rich in history, diversity and points of interest. Attractions include the Gateway Arch, the West's tallest manmade monument and the St. Louis Zoo. With a population of over three million, St. Louis is home to numerous academic and arts institutions, and major corporations including Panera, Emerson Electric, Enterprise Holdings and Reinsurance Group of America.



To apply or suggest a prospective candidate, email
eden@boardwalkconsulting.com
or call Kathy Bremer or Ayanna Grady-Hunt at 404-262-7392